



TECHNICAL INSPECTION & CERTIFICATION SERVICES FOR OIL & GAS FACILITIES

A vertical photograph on the left side of the slide showing an industrial facility at night. The scene is illuminated with blue and white lights, highlighting a complex network of pipes, metal structures, and a tall tower. The background is a dark blue sky.

HELLO!

I am Roni Christanto

PT Depriwangga's Director of Marketing & Operations

I am here because I love to give my experiences and presentations.

You can find me at roni@depriwangga.com or WA/Mobile phone no. +6281315901715



OIL & GAS EXPLORATION VIDEO



EXPLORATION & PRODUCTION OF OIL & GAS





Technical Inspection are activities to conduct a review, verification, witness and visual of an equipment and facilities.

The equipment is made based on Client Specifications, Code & Standards and Government Regulations. ““





WHY?

**To ensure the feasibility
operation of equipment and
facilities.**



TYPE OF EQUIPMENT & FACILITIES



- | **ELECTRICAL EQUIPMENT**
Generator, Transformer, MCC & Switchgear



- | **ROTATING EQUIPMENT**
Compressor & Pump



- | **METERING SYSTEM & INSTRUMENT**

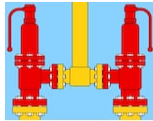


- | **PRESSURE VESSEL, BOILER & HEAT EXCHANGER**

TYPE OF EQUIPMENT & FACILITIES



● — | **STORAGE TANK**



● — | **PRESS. RELIEF DEVICE**
PSV, Breather valve



● — | **CRANE**
Mobile Crane, Overhead Crane & Pedestal Crane



● — | **PIPELINE**

TYPE OF EQUIPMENT & FACILITIES



● ——— | PLATFORM



● ——— | FACILITY/INSTALLATION/PLANT

OTHERS

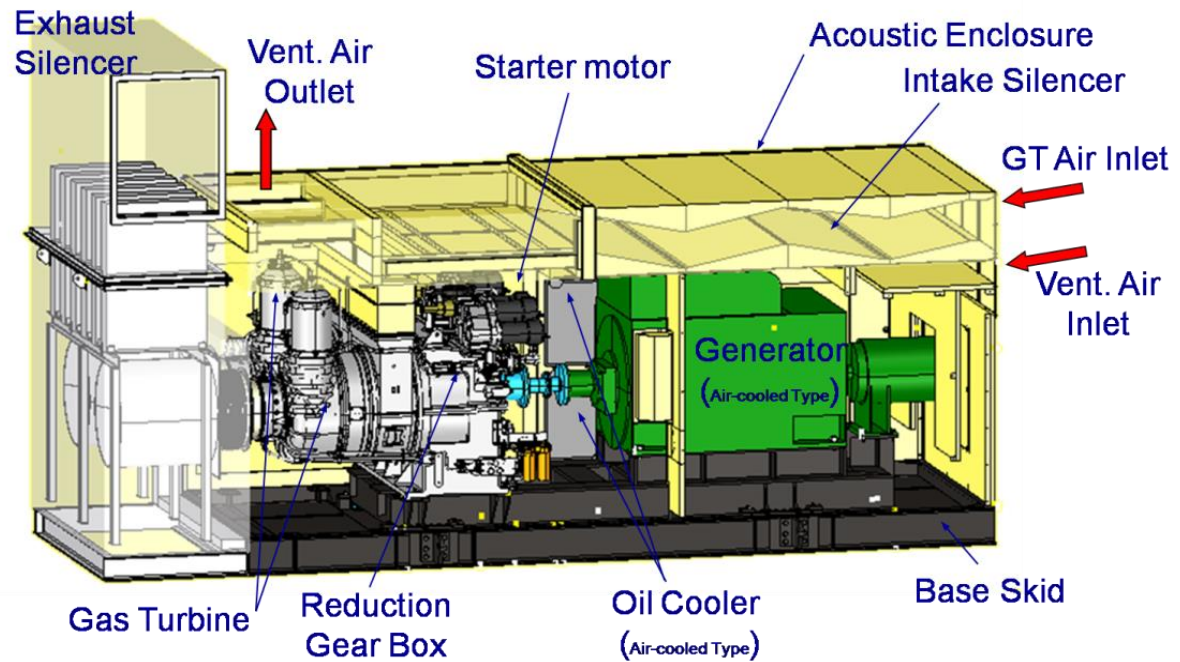


● ——— | WPS/PQR & WELDER CERTIFICATES



● ——— | CALIBRATION

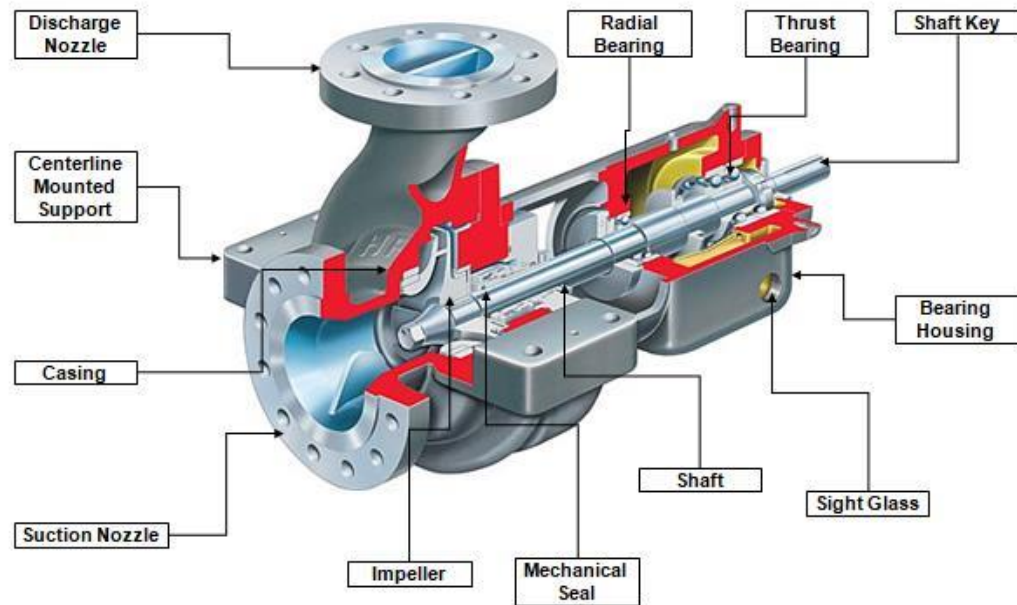
DETAILS OF ELECTRICAL EQUIPMENT (GENERATOR)



Source: mnes-us.com

Electrical equipment, that is equipment generating, distributing and controlling the electrical power system.

DETAILS OF ROTATING EQUIPMENT (PUMP)



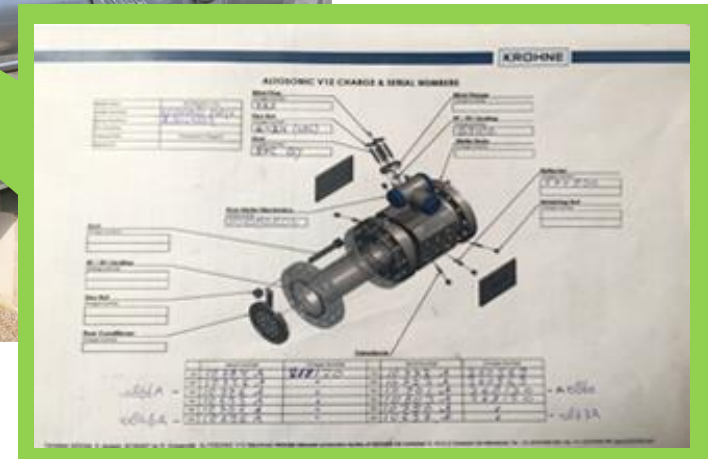
Source: cceonlinenews.com

Rotary Equipment, that is equipment functioning to remove or compress hydrocarbon (petroleum, gas and geothermal)

DETAILS OF METERING SYSTEM

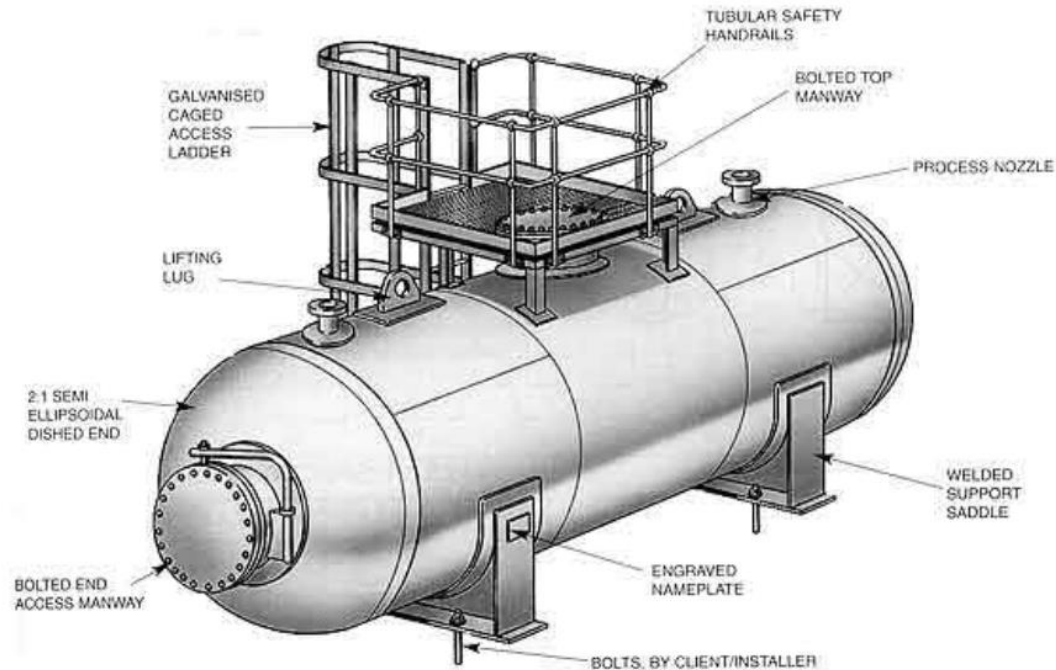


Source: krohne.com



Integrated measurement instrument
used for fluid measurement in Oil
and Gas business activities

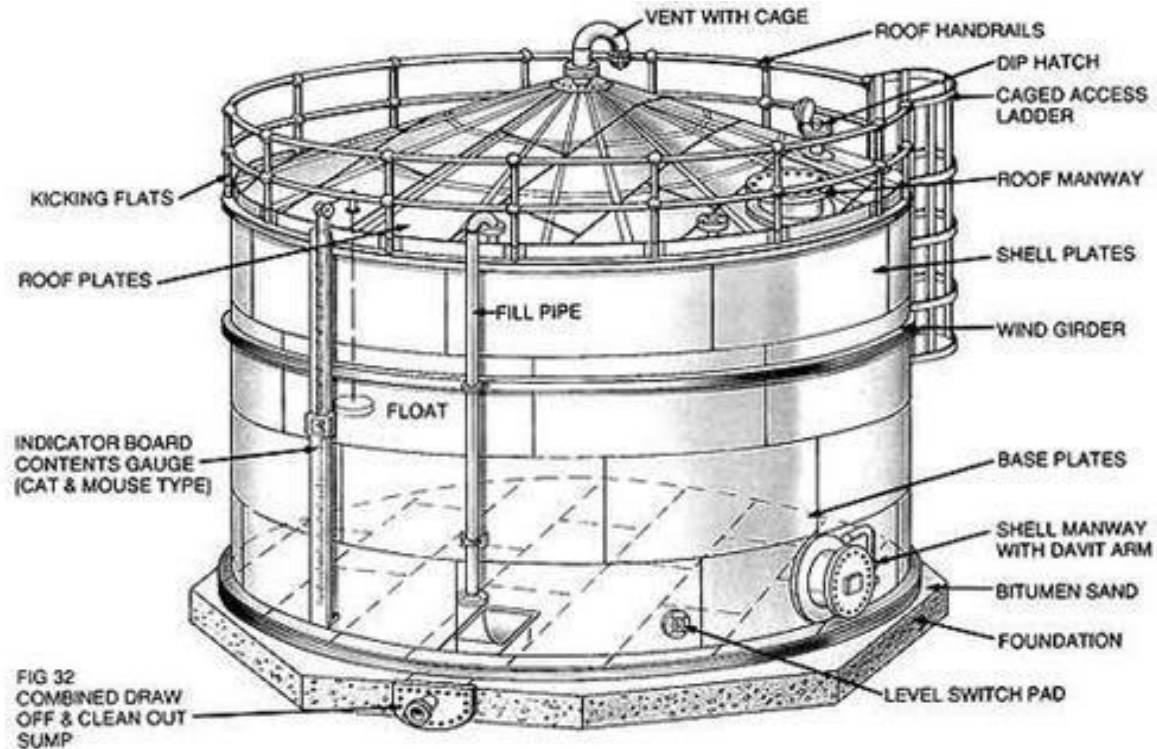
DETAILS OF PRESSURE VESSEL



Source: Arvengtraining.com

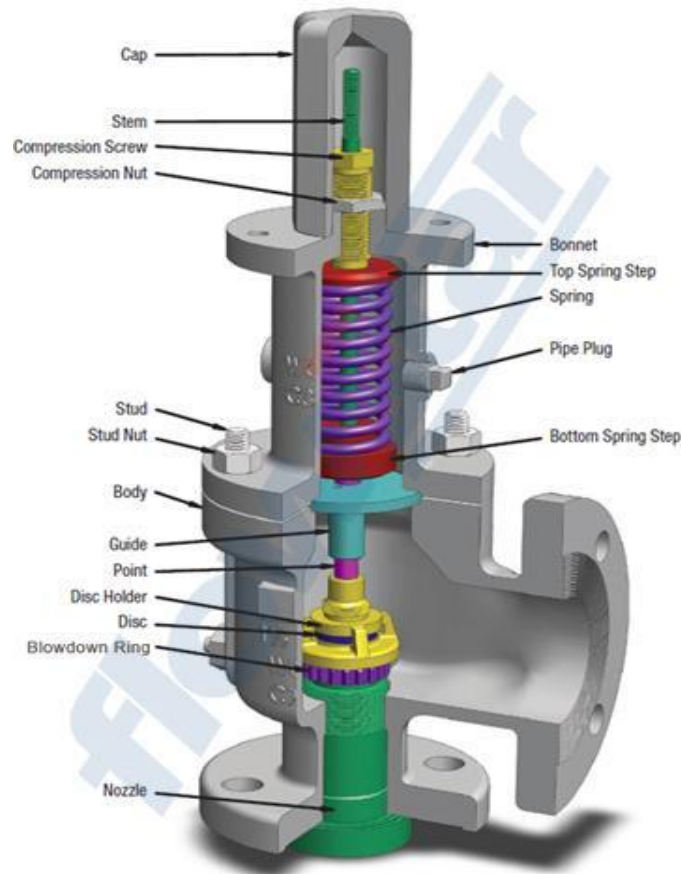
Pressure Vessel with design pressure above or below atmospheric pressure, and has a diameter equal or more than Nominal Pipe Size 6'
Note: 1 Atm = 14.7 psi

DETAILS OF STORAGE TANK



Atmospheric pressure storage tank used to store product with hydrocarbon contents (oil and gas) and derivatives

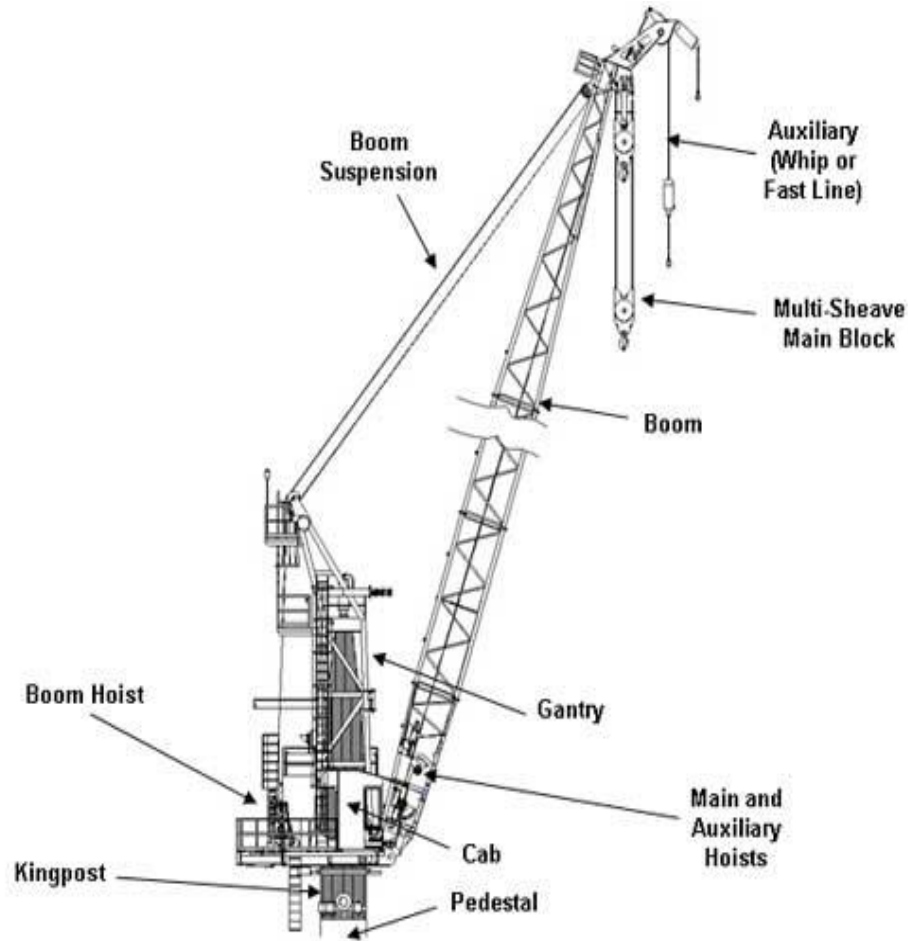
DETAILS OF PRESSURE SAFETY VALVE



Safety Valves, that is equipment useful to protect the related equipment and facilities, comprising: PSV, PRV, Breather Valve, TRF, etc. Safety Valve is designed specifically to release over pressure in the equipment and piping system

Source: cdn.shopify.com

DETAILS OF PEDESTAL CRANE

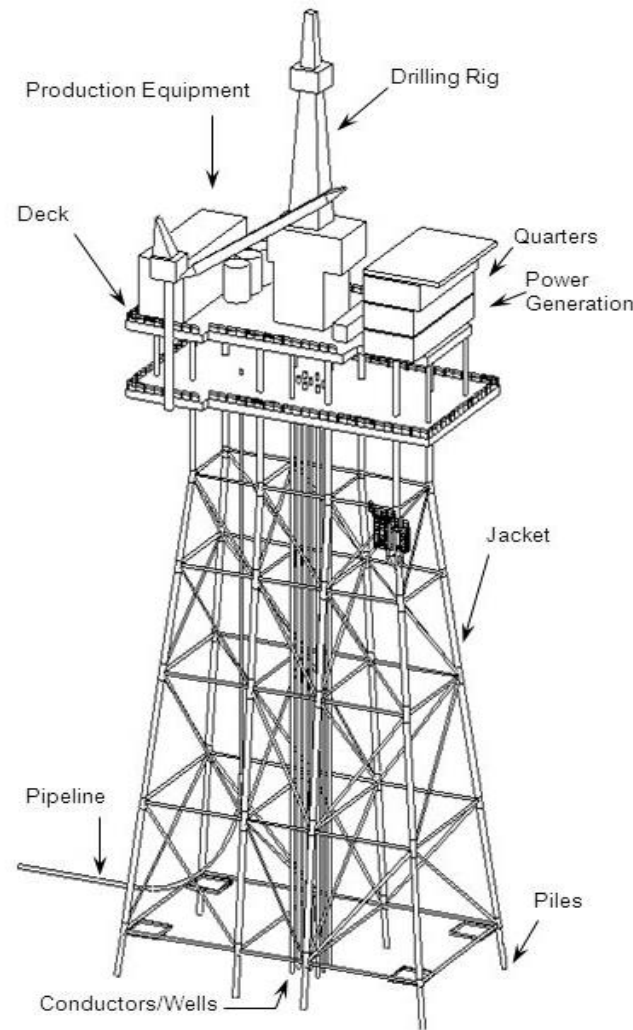


Lifting Equipment / Crane, that is equipment to remove, lift up goods and person, vertically and / or horizontally at a distance, among others

Source: seatrax.com



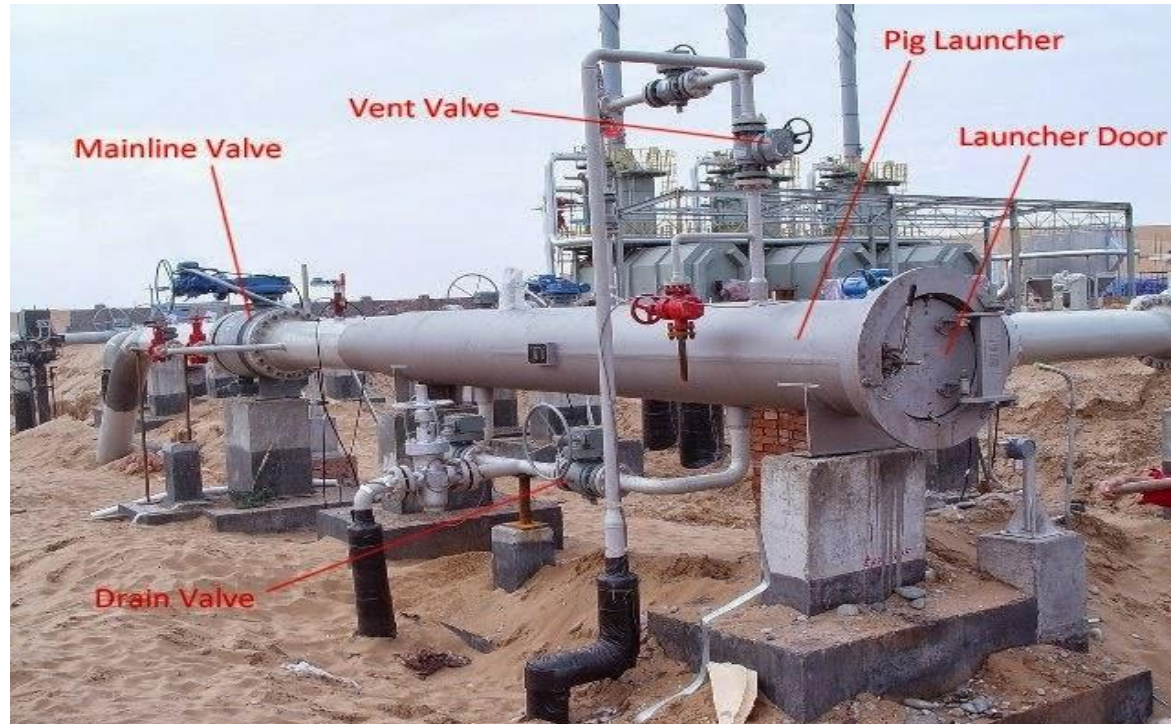
DETAILS OF PLATFORM



An oil platform, offshore platform, or offshore drilling rig is a large structure with facilities for well drilling to explore, extract, store, and process petroleum/oil and natural gas that lies in rock formations beneath the seabed

Source: slideplayer.com

DETAILS OF PIPELINE

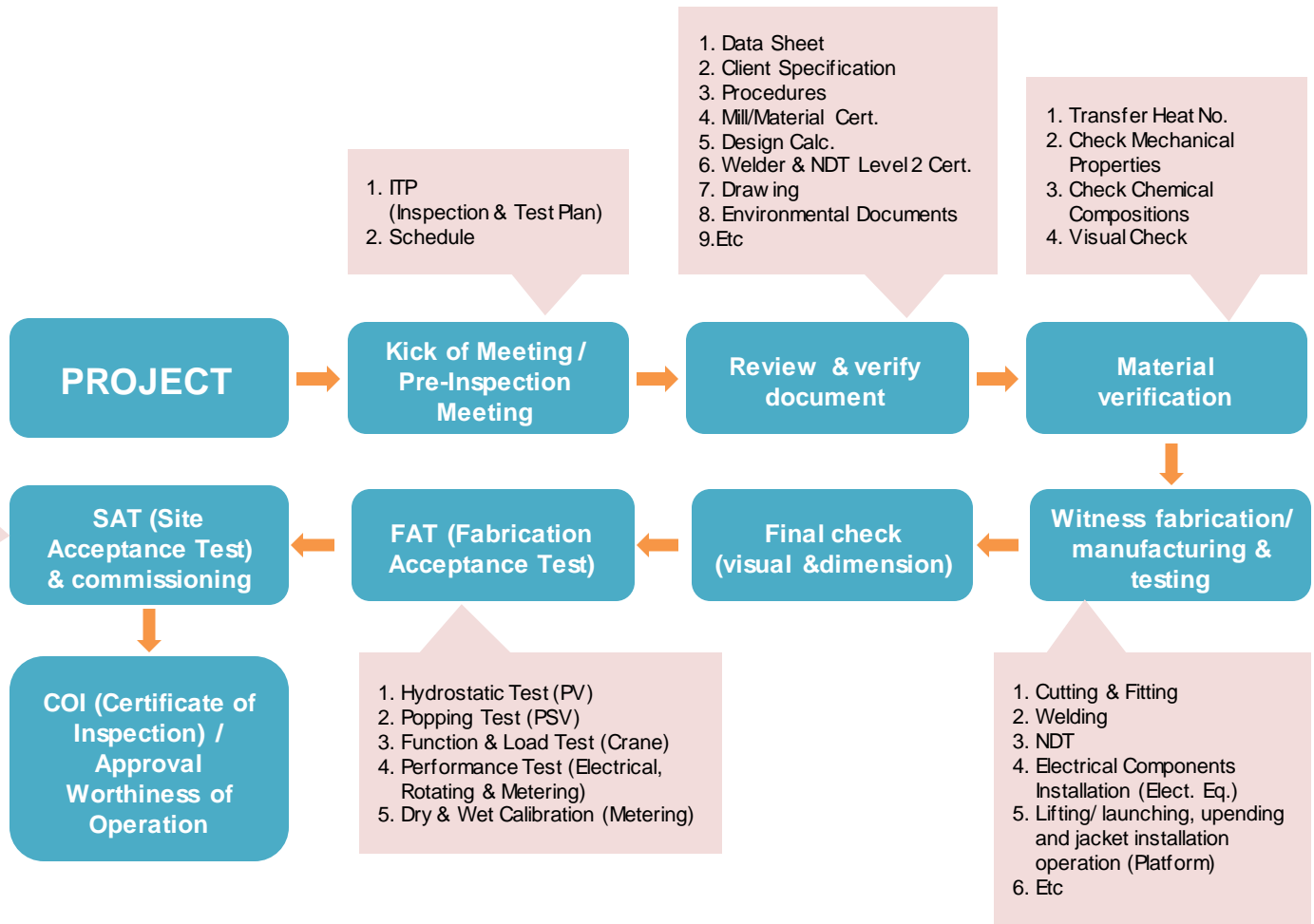


Source: <https://sites.google.com/site/metropolitanenvironmental/>

Pipeline, that is a range of pipe together with related facilities used to transmit and distribute Oil and Gas as well as geothermal

INSPECTION FLOWCHART

- 1. Hydrostatic Test (Pipeline & Tank)
- 2. Settlement (Tank)
- 3. Levelling jacket and final measurement of elevation (Platform)
- 4. Performance Test (Electrical, Rotating & Metering)



PROJECT OVERVIEW

NO.	PROJECT	USER / OPERATOR	LOCATION	STATUS 2019	PRODCUTION TARGET
1.	Merakes	ENI East Sepinggan	Makassar Strait, East Kalimantan	Under Construction	600 MMscfd
2	IDD Gendalo-Gehem	Chevron	Makassar Strait	Pre-FEED	Gendalo 700 MMscfd & 20.000 bpd at Q4-2022 Gehem 420 MMscfd & 27.000 BPD at Q3-2023
3.	Tangguh Train 3	BP Tangguh	Tangguh, Papua	Under Construction	LNG 3,8 MTPA (equiv. 700 MMscfd) & 3.000 BOPD at Q4-2020
4	Abadi (LNG)	Inpex Masela	Arafuru Sea	Pre-FEED	9,5 MTPA, 150 MMscfd at 2027
5	Jambaran Tiung Biru	Pertamina EP Cepu	Bojonegoro, East java	Under Construction	190 MMscfd at 2021

UPSTREAM PROJECT ONSTREAM IN 2020

01 TSB



KANGEAN ENERGY INDONESIA

- 12 Maret 2019
- Kapasitas : 185 MMscfd

02 SENG SEGAT



EMP BENTU LIMITED

- 14 Mei 2019
- Kapasitas 60 MMscfd

03 ARIO DAMAR



TROPIK ENERGY PANDAN

- 1 September 2019
- Kapasitas : 20 MMscfd

04 SUBAN



**CONOCOPHILLIPS
GRISSIK LTD.**

- 26 Oktober 2019
- Kap : 780 MMscfd

TOTAL PROYEK	9
KAPASITAS PRODUKSI	8,500 BOPD 1,150 MMSCFPD*
TOTAL INVESTASI	1.02 US\$ Miliar



05 KEDUNG KERIS



EXXON MOBIL CEPU LTD

- 22 November 2019
- Kapasitas : 3.800 bopd

BISON IGUANA GAJAH PUTERI

06



PREMIER OIL NSBV

- 8 November 2019
- Kapasitas : 80 MMscfd

TEMELAT

07



PT MEDCO EP INDONESIA

- 9 Desember 2019
- Kapasitas 10 MMscfd

BAMBU BESAR

08



PT PERTAMINA EP

- 29 Desember 2019
- Kapasitas 2700 BOPD

PANEN

09



PETROCHINA JABUNG LTD

- 30 Desember 2019
- Kapasitas 4000 BOPD dan 15 MMSCFD



PROJECT DESCRIPTION

PERTAMINA RU V BALIKPAPAN, REFINERY DEVELOPMENT MASTERPLAN PROGRAM

Current capacity production of Refinery Unit Balikpapan is 260.000 bopd will increase to 360.000 bopd after modification. Fuel products from Refinery Unit Balikpapan still Euro 2 and will be increased till Euro 5

CHANDRA ASRI PETROCHEMICAL, NAPHTHA REFINERY PROJECT

The refinery would be built on 80 hectares of land near its existing facilities in Cilegon, Banten. It would also have a production capacity of 100,000 barrels of condensate per day, equivalent to the creation of 2.5 million tons of naphtha per year.

PLTP (Pembangkit Listrik Tenaga Panas Bumi) Baturaden 220 MW

PLTP Baturaden is National Strategic Projects as mandated by Presidential Regulation No. 3 th 2016 on the acceleration of the implementation of National Strategic Project

CLOSING

"TO BE THE MOST VALUED PARTNER OF COLLEAGUES"



Switzerland



Saudi Arabia



Malaysia



Czech



Japan



Germany



Netherlands



Singapore



India



Scotland



France



United States



United Kingdom



Italy



Luxemburg



China (Rep. of)



Qatar



Spain



United Arab Rep.



Denmark



